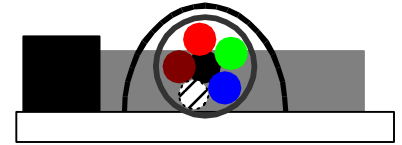
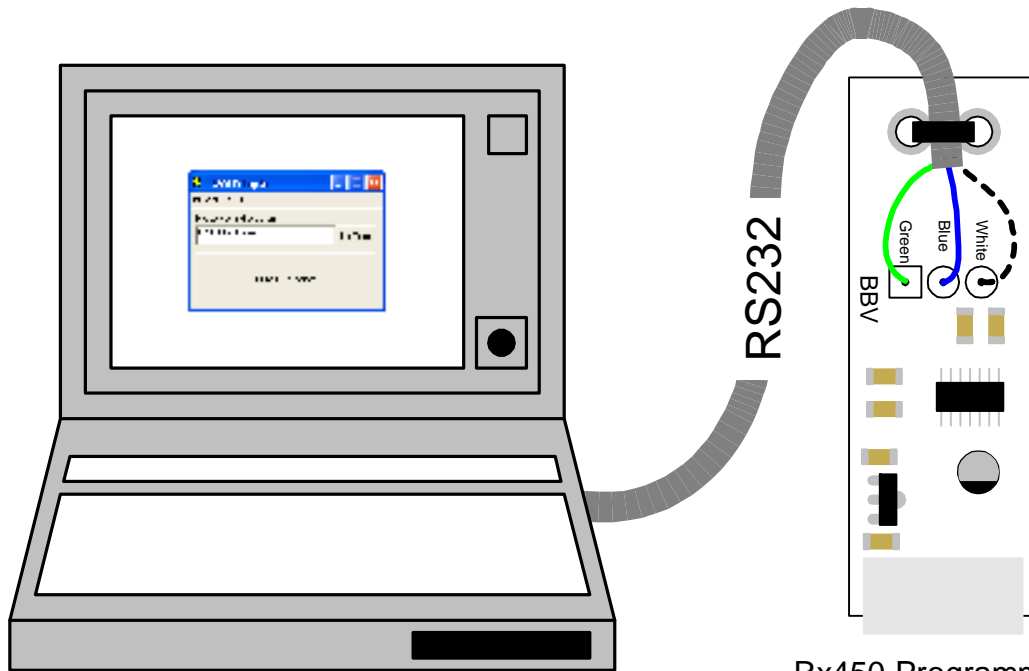
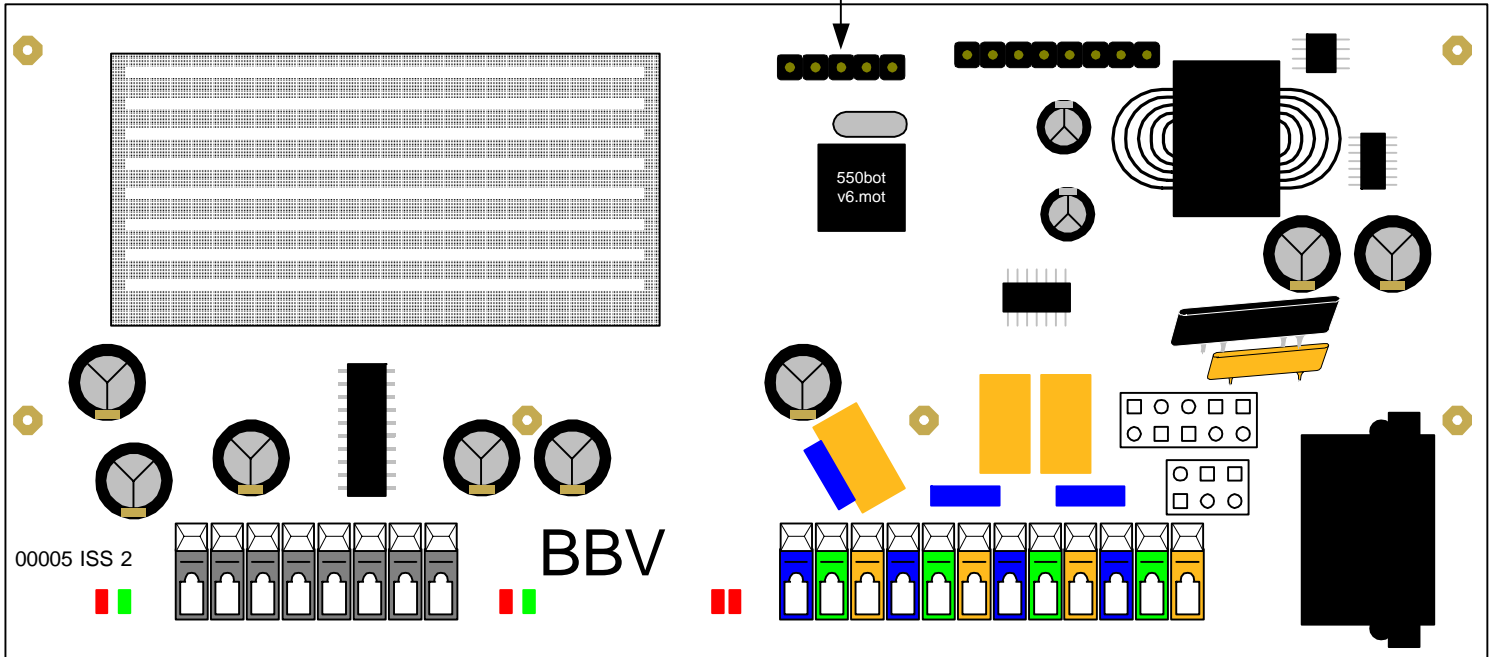




**MUST BE FITTED
THIS WAY ROUND**



Rx450 Programming Adapter



Laptop computer

Rx450 Programming Adapter

Building Block Video Ltd

(Rx550 & Rx55X BOTTOM BOARD BEING PROGRAMMED FROM A Rx450 PROGRAMMING ADAPTER 16 11 2007)

17 Apex Park, Diplocks Industrial Estate, Hailsham, East Sussex, UK. BN27 3JU.

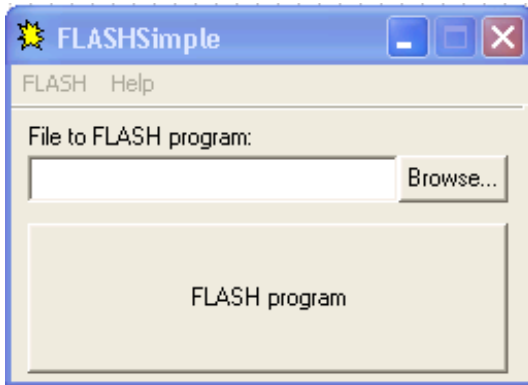
Tel:+44(0)1323 842727 Fax:+44 (0)1323 842728 Support:+44(0)1323 444600 www.bbvctv.com



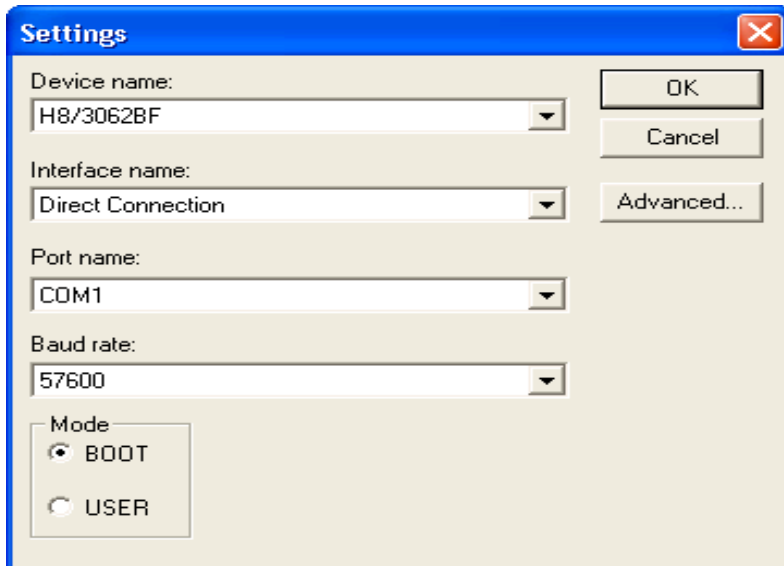
These instructions for the programming utility Flash Simple, which must be unzipped into a directory named c:\FlashSimple. You will also need the software which is going to be used to update Rx550 & Rx55X Bottom board "550botv**.mot" Please save this to your computer.

The procedure is as follows:

Run **FlashSimple.exe**



Select **FLASH** then **Settings**



Set as shown:

Device name **H8/3062BF**

Interface name **Direct Connection**

Port name **COM1** or the number of the port that you are using

Baud rate **57600**

Mode **BOOT**

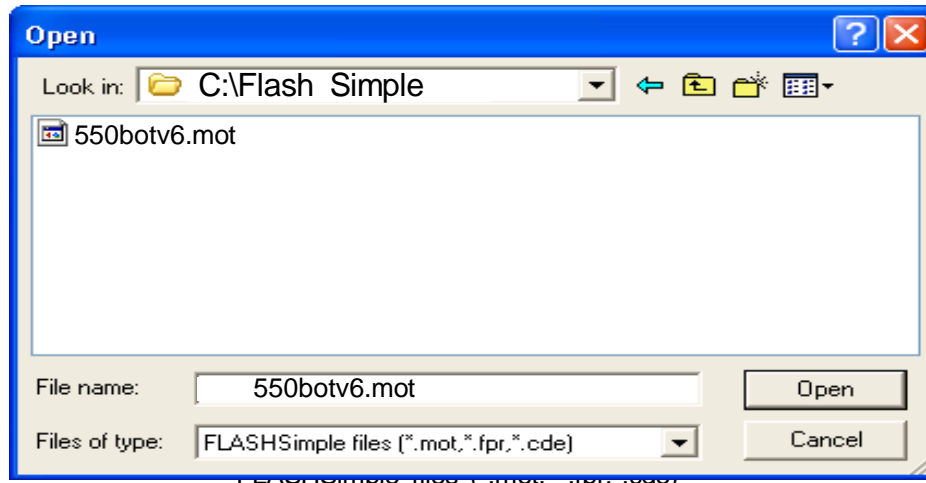
Then click **OK**

Building Block Video Ltd

(Rx550 & Rx55X BOTTOM BOARD BEING PROGRAMMED FROM A Rx450 PROGRAMMING ADAPTER 16 11 2007)

17 Apex Park, Diplocks Industrial Estate, Hailsham, East Sussex, UK. BN27 3JU.

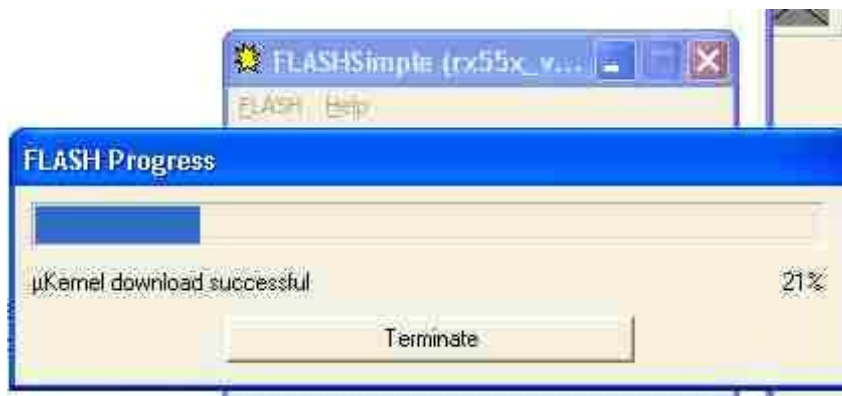
Tel:+44(0)1323 842727 Fax:+44 (0)1323 842728 Support:+44(0)1323 444600 www.bbvccctv.com



Power off the Receiver and then you will need to remove the Top Board of the Rx550/Rx55X and plug it the Rx450 Programming adaptor with the components facing away from the front of the edge of the receiver where the Auxiliary connections are located.

Power up the Receiver.

Click on **FLASH program** and the following status window will be displayed.



If programming is successful then this window is shown



Power off the Receiver and click **OK**. Then remove the Rx450 Programming Adaptor. When the Unit is powered up you will need to make sure one of the red LEDs comes on for about 1 second.

If you have another window that opens that shows an error then power the Receiver off and then on again and try programming again. If it still doesn't program correctly power the Receiver off again and make sure that the Programming adaptor is connected correctly. Power the Receiver on again and try the procedure again.

When the unit is successfully reprogrammed you will need to refit the Receiver top board

It is VERY important to make sure that the Rx450 Programming Adaptor is NOT removed when the Receiver is powered up as this could damage the micro processor.

Building Block Video Ltd

(Rx550 & Rx55X BOTTOM BOARD BEING PROGRAMMED FROM A Rx450 PROGRAMMING ADAPTER 16 11 2007)

17 Apex Park, Diplocks Industrial Estate, Hailsham, East Sussex, UK. BN27 3JU.

Tel:+44(0)1323 842727 Fax:+44 (0)1323 842728 Support:+44(0)1323 444600 www.bbvctv.com