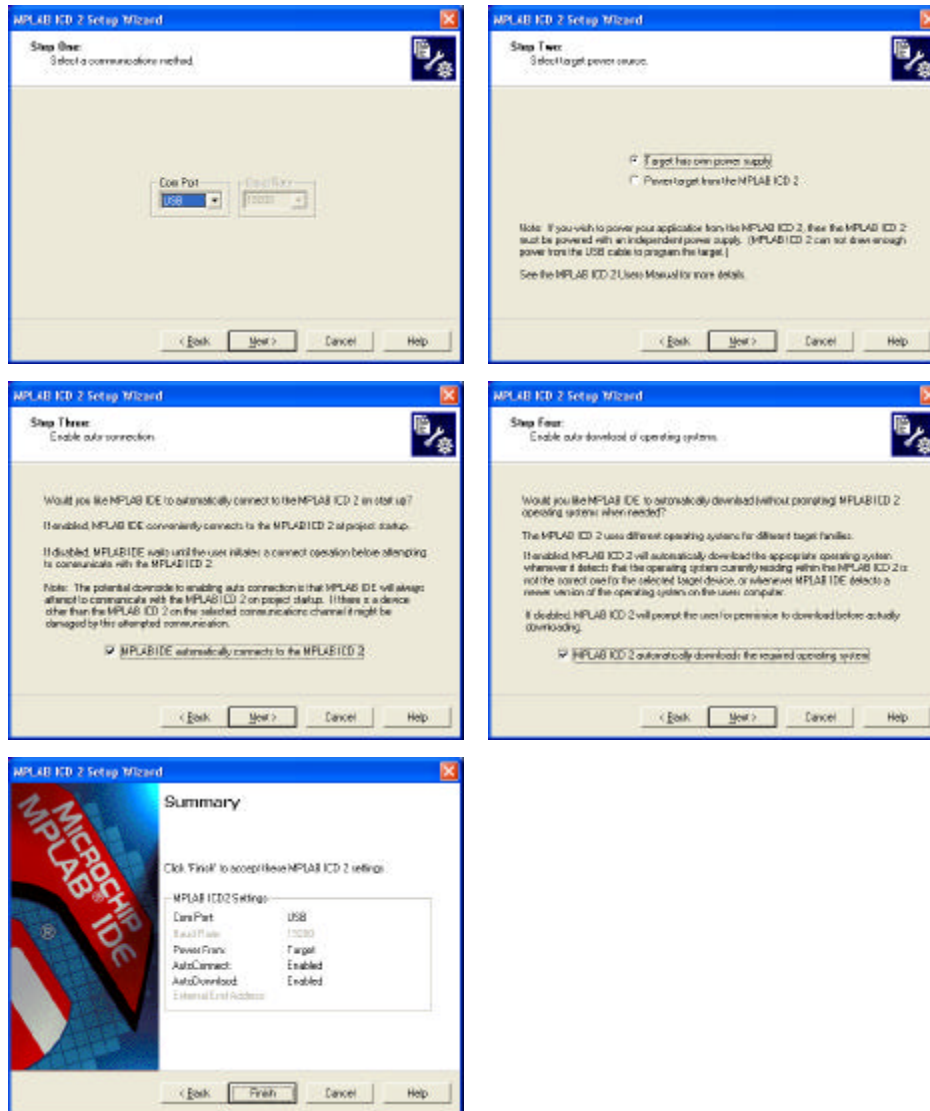


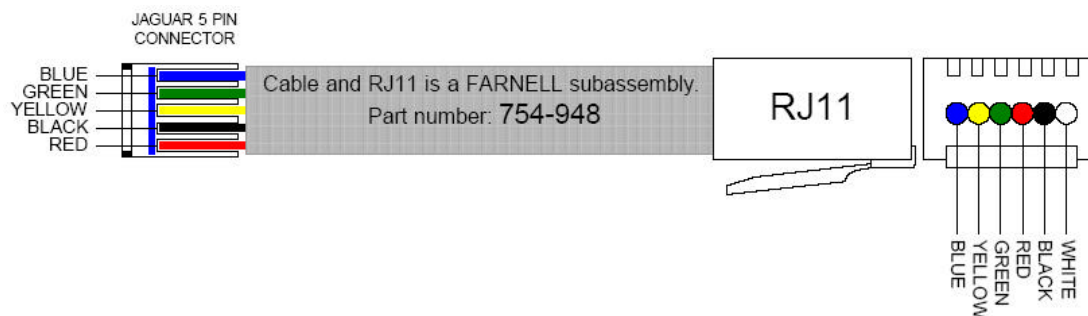
Programming a BBV RX100 with Microchip MPLAB and ICD2 programmer (Rx100 must be using PIC16F877A processor)

Use Microchip MPLAB 6.4 or later software and Microchip ICD2 USB In-Circuit Debugger/Programmer. Follow the instructions to install the software and ICD2 device drivers.

When prompted please set the ICD2 as follows:



The ICD2 connects to the RX100 via a 5 core cable as follows:

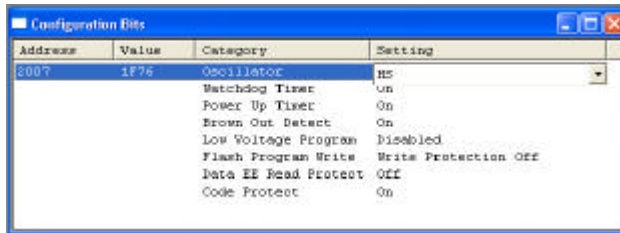


Programming Procedure

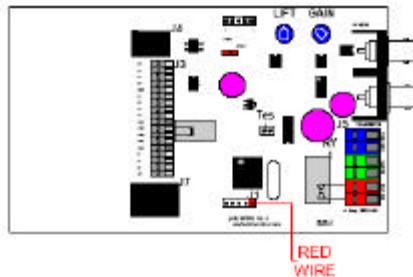
1. Run MPLAB
2. Select PROGRAMMER/SELECT PROGRAMMER/MPLAB ICD2
3. Select CONFIGURE/SELECT DEVICE and select PIC16F877A.



4. Select CONFIGURE/CONFIGURATION BITS and set as below.



5. Select FILE/IMPORT and navigate to the correct file ie RX1_P2V9.HEX
6. Connect cable between ICD2 and RX100 J1 and apply power to RX100



7. Select PROGRAMMER/CONNECT to allow MPLAB to connect to ICD2.
8. Select the PROGRAM TARGET DEVICE ICON.



9. If all is well and the device verifies ok then the following message is shown in the output box.

```

MPLAB ICD 2 Ready
Programming Target..
...Erasing Part
...Programming Program Memory (0x0 - 0x1677)
Verifying...
...Program Memory
...Verify Succeeded
Programming Configuration Bits
...Config Memory
Verifying configuration memory...
...Verify Succeeded
...Programming succeeded
MPLAB ICD 2 Ready
    
```

10. Remove the connector from J1 and power the RX100 OFF/ON.
11. If the RX100 is to be installed then please write the software filename on the software label to prevent future confusion.