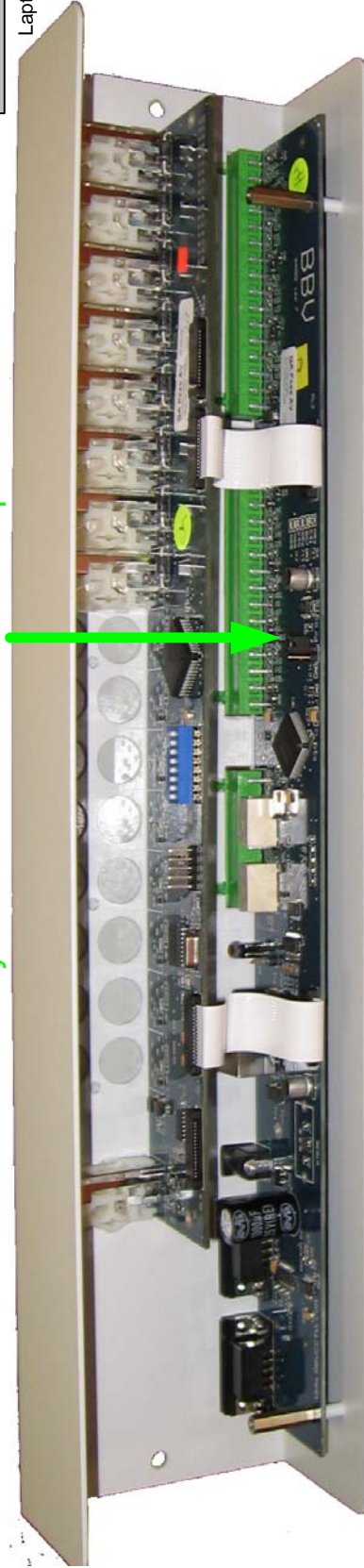
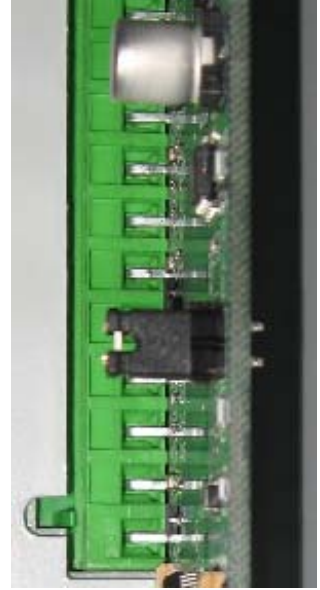


Laptop computer

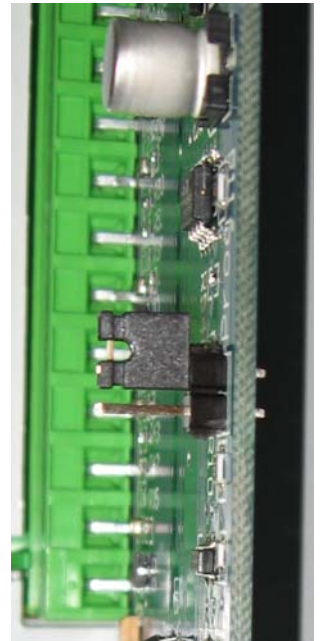
Programming LINK found at the rear of Matrix  
you will need to remove front panel



PROGRAM LINK FITTED



PROGRAM LINK NOT FITTED



Building Block Video Ltd (Tx1000 BEING PROGRAMED FROM RS232, 19 04 2007)

17 Apex Park, Diplocks Industrial Estate, Hailsham, East Sussex, UK. BN27 3JU.

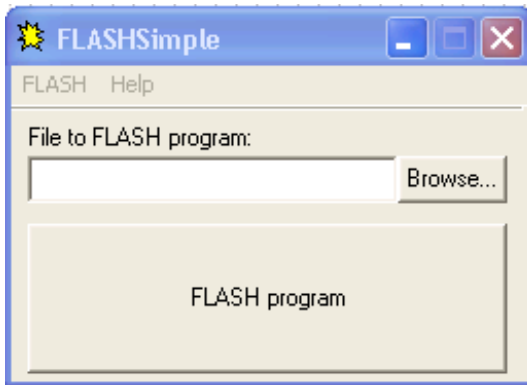
Tel:+44(0)1323 842727 Fax:+44 (0)1323 842728 Support:+44(0)1323 444600 www.bbvccv.com



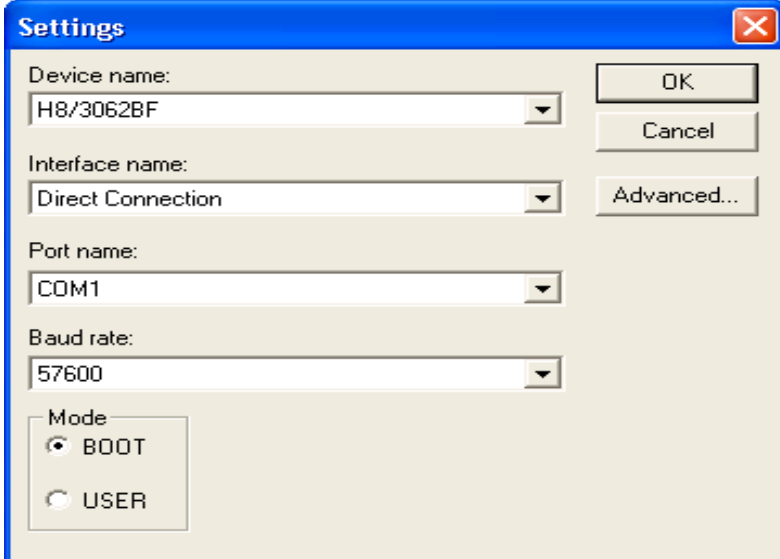
These instructions for the programming utility Flash Simple, which must be unzipped into a directory named c:\FlashSimple. You will also need the software which is going to be used to update the Tx1000 - TX1000v\*\*\*.mot Please save this to your computer.

The procedure is as follows:

#### Run **FlashSimple.exe**



#### Select **FLASH** then **Settings**



Set as shown:

Device name **H8/3062BF**

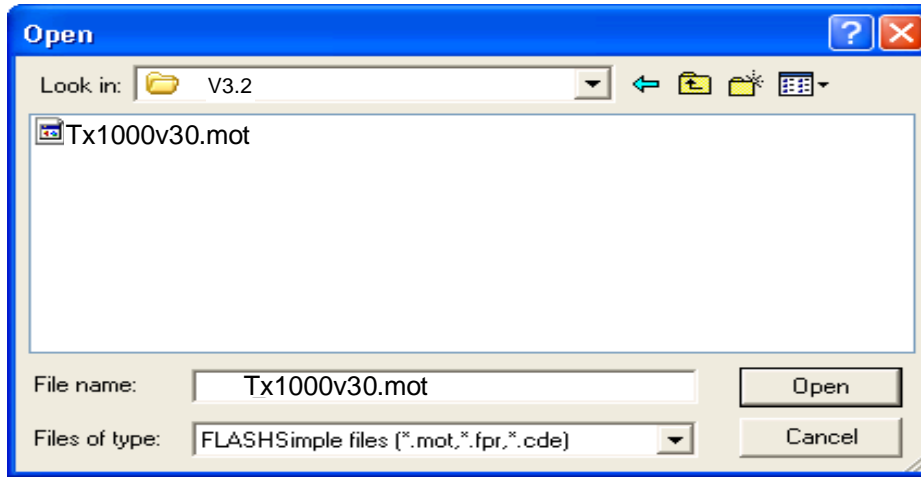
Interface name **Direct Connection**

Port name **COM1** or the number of the port that you are using

Baud rate **57600**

Mode **BOOT**

Then click **OK**

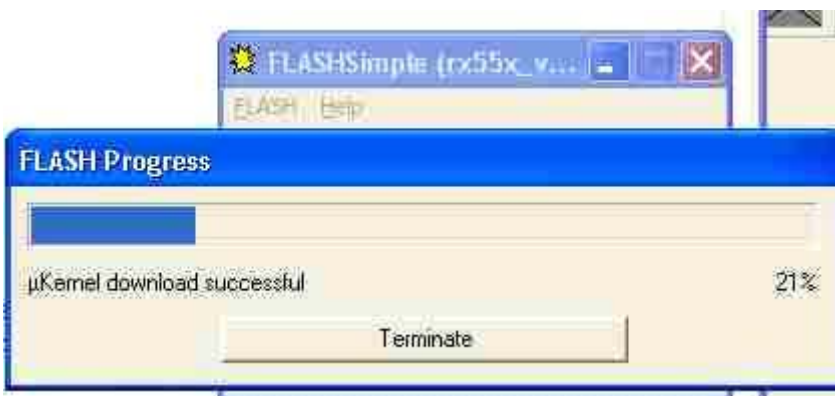


Power off the Matrix and fit the programming LINK on the Monitor board which is marked Prog (You will need to Remove the front plate of the Matrix

Plug the RS232 null modem cable in to the keyboard 2 port on the matrix as shown on page 1,

Power up the Matrix

Click on **FLASH program** and the following status window will be displayed.



If programming is successful then this window is shown



Power off the Matrix and click **OK**. Then remove the programming link and power up Matrix. When the Matrix is powered up and the monitor video is passed through the Tx1000 keyboard it will show the software Version. If you have another window that opens that shows an error then power the Matrix off and then on again and try programming again. If it still doesn't program correctly power the Matrix off again and make sure that the null modem cable is plugged into the PC and the matrix correctly. Power the Matrix on again and try the procedure again.

It is VERY important to make sure that the programming Link is NOT removed when the Matrix is powered up as this could damage the micro processor.