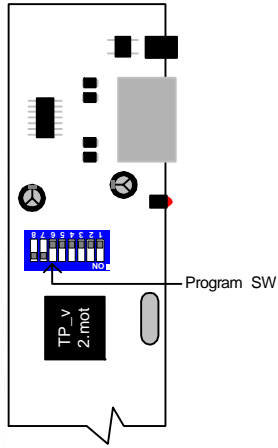


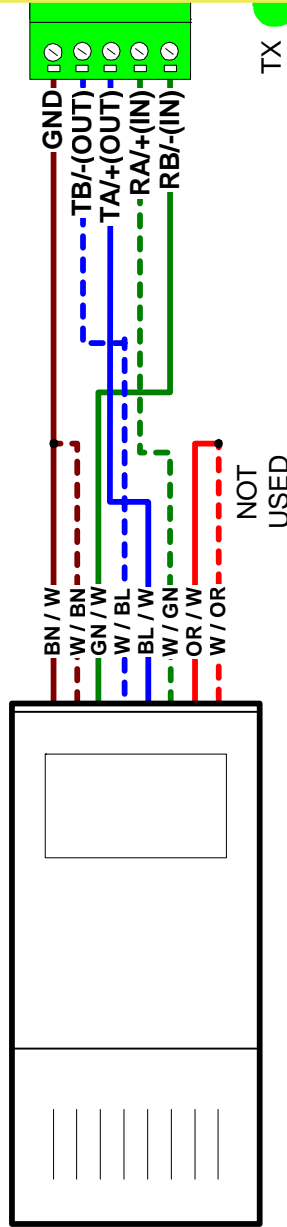
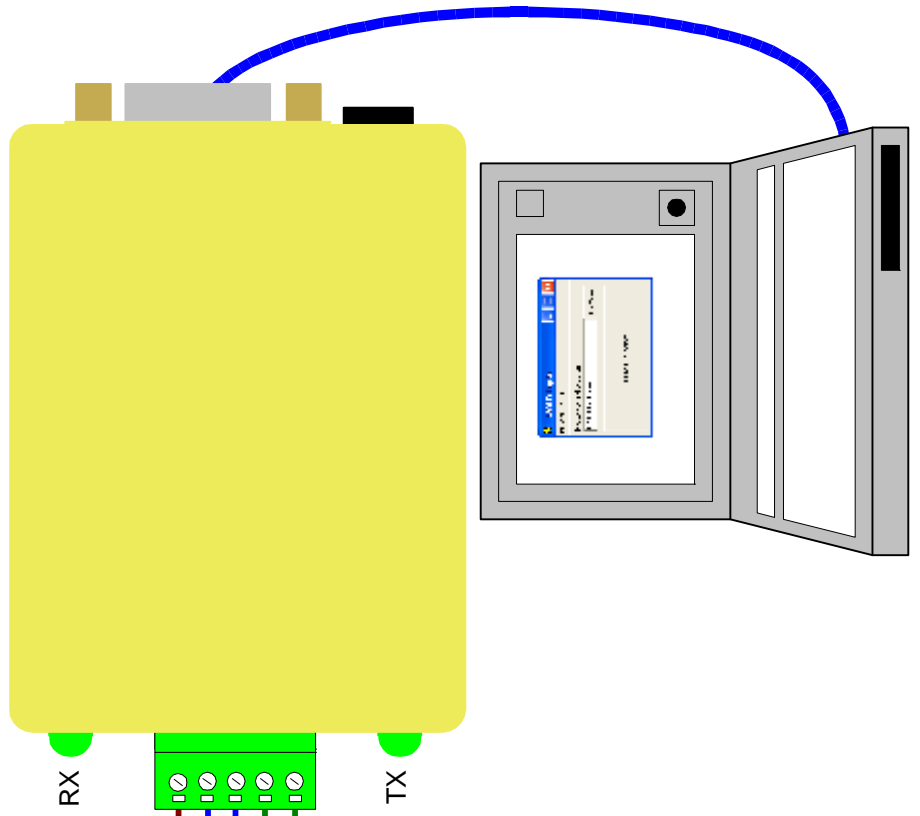


USE RS422 CONTROL IN TO PROGRAM UNIT

Programming SWITCH (Bit 6) found inside of the 20mA Card. you will need to remove rear panel



TxLD or another type of RS422 to RS232 converter



Building Block Video Ltd (Tx TPO MK2 BEING PROGRAMED FROM A TxLD, 29 08 2007)

17 Apex Park, Diplocks Industrial Estate, Hailsham, East Sussex, UK. BN27 3JU.

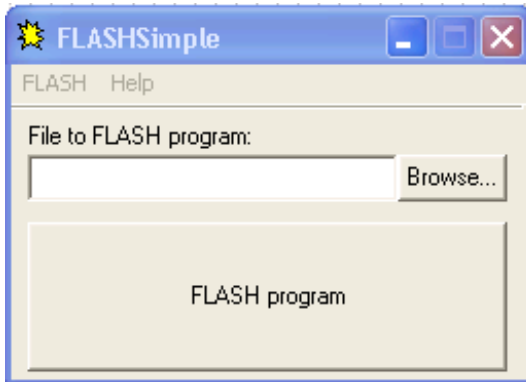
Tel:+44(0)1323 842727 Fax:+44 (0)1323 842728 Support:+44(0)1323 444600 www.bbvctv.com



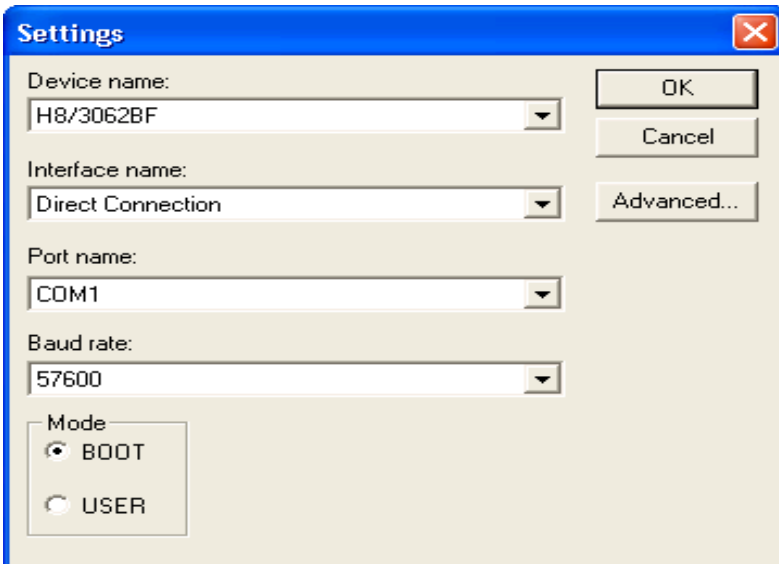
These instructions for the programming utility Flash Simple, which must be unzipped into a directory named c:\FlashSimple. You will also need the software which is going to be used to update the Tx TPO MK2 – TP_V*.mot Please save this to your computer.

The procedure is as follows:

Run **FlashSimple.exe**



Select **FLASH** then **Settings**



Set as shown:

Device name **H8/3062BF**

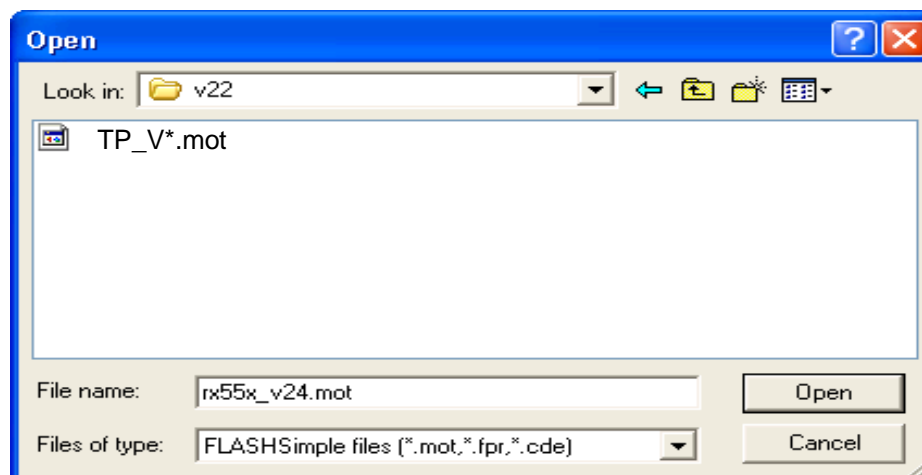
Interface name **Direct Connection**

Port name **COM1** or the number of the port that you are using

Baud rate **57600**

Mode **BOOT**

Then click **OK**

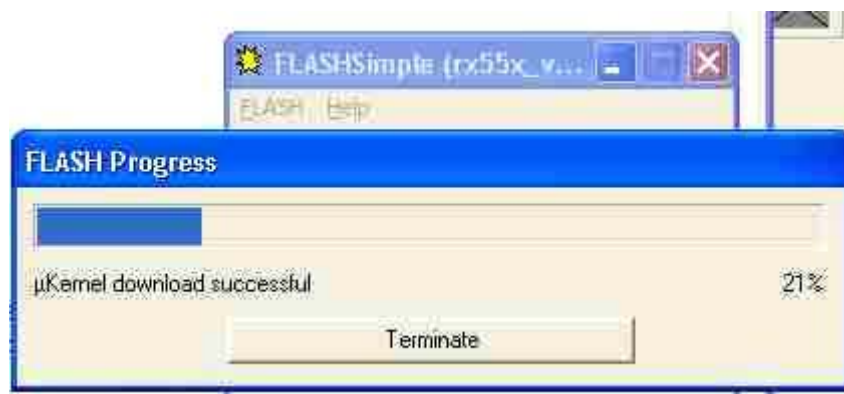


Power off the Tx TPO MK2 Card and turn on the Program switch on (Bit 6) of the 8 way Dip switch which is marked Program (You will need to remove the back plate of the Tx TPO MK2 Card)

Make sure the TxLD adapter is powered up.

Power up the Tx TPO MK2 Card.

Click on **FLASH program** and the following status window will be displayed.



If programming is successful then this window is shown



Power off the Tx TPO MK2 Card and click **OK**. Then off the program switch and power up Tx TPO MK2 Card. When the Unit is powered up you will need to make sure the red LED comes on after about 1 second.

If you have another window that opens that shows an error then power the Tx TPO MK2 Card off and then on again and try programming again. If it still doesn't program correctly power the Tx TPO MK2 Card off again and make sure that the TxLD is connected correctly. Power the Tx TPO MK2 Card on again and try the procedure again.

It is VERY important to make sure that the programming Link is NOT removed when the Tx TPO MK2 Card is powered up as this could damage the micro processor.