



The converter PCB is located inside of the unit. When you remove the 4 Screws you will be able to slide the front unit out and gain access to the converter.

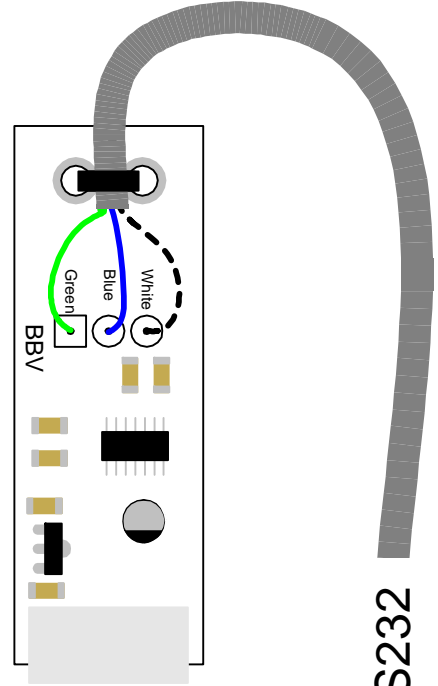
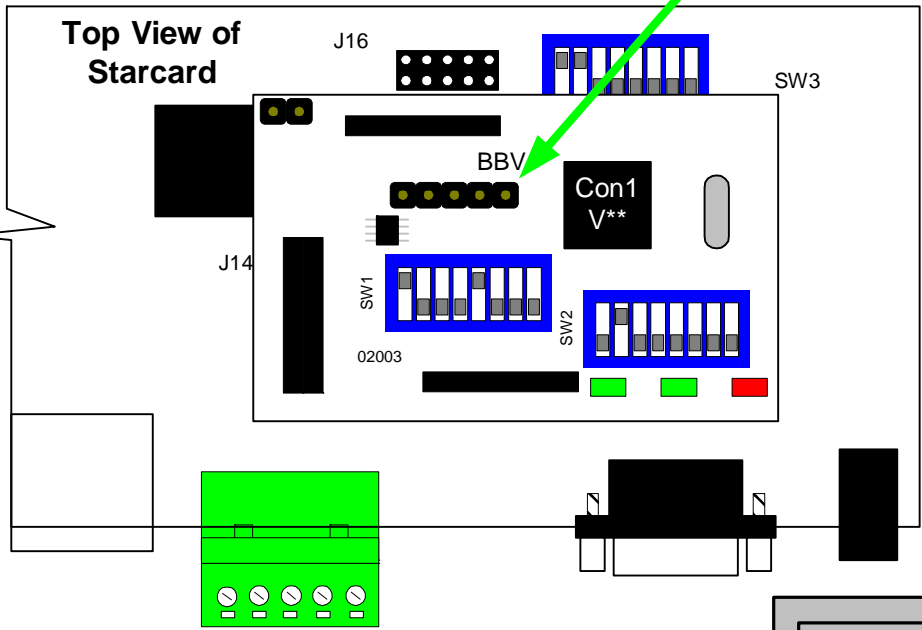


- 1, To Program the Converter Board you Must Power down the Starcard.
- 2, Plug into the Rx450 Programming Adapter.
- 3, Power up the Starcard.
- 4, And Left click on FLASH program on the Flash Simple Application.
- 5, Power Down the Starcard.
- 6, Remove the Rx450 Programming Adapter.

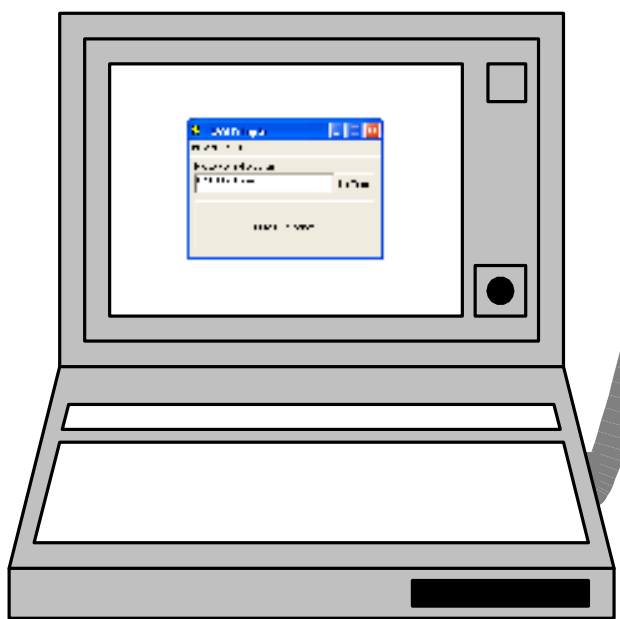
MUST BE FITTED THIS WAY ROUND



Rx450 Programming Adapter



Rx450 Programming Adapter



Laptop computer

RS232

Building Block Video Ltd

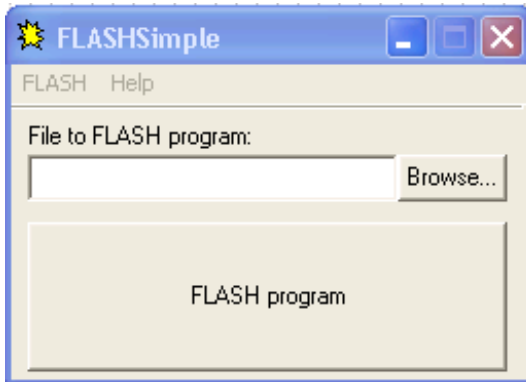
(STARCARD CONVERTER BEING PROGRAMMED FROM A Rx450 PROGRAMMING ADAPTER 15 011 2007)
 17 Apex Park, Diplocks Industrial Estate, Hailsham, East Sussex, UK. BN27 3JU.
 Tel:+44(0)1323 842727 Fax:+44 (0)1323 842728 Support:+44(0)1323 444600 www.bbvctv.com



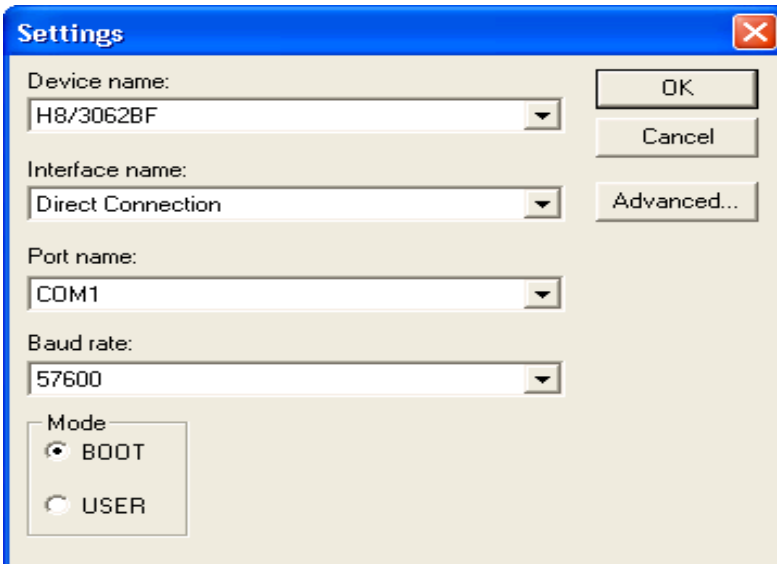
These instructions for the programming utility Flash Simple, which must be unzipped into a directory named c:\FlashSimple. You will also need the software which is going to be used to update Starcard Converter "conv1v**.mot" Please save this to your computer.

The procedure is as follows:

Run **FlashSimple.exe**



Select **FLASH** then **Settings**



Set as shown:

Device name **H8/3062BF**

Interface name **Direct Connection**

Port name **COM1** or the number of the port that you are using

Baud rate **57600**

Mode **BOOT**

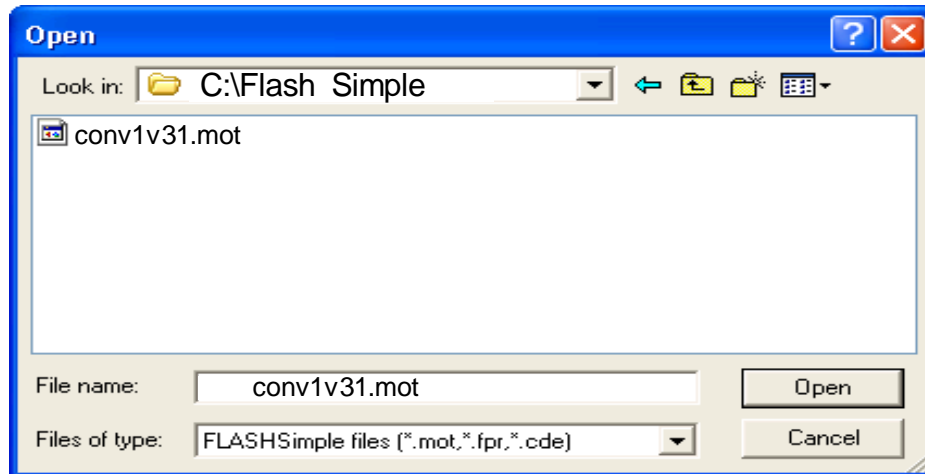
Then click **OK**

Building Block Video Ltd

(STARCARD CONVERTER BEING PROGRAMMED FROM A Rx450 PROGRAMMING ADAPTER 15 011 2007)

17 Apex Park, Diplocks Industrial Estate, Hailsham, East Sussex, UK. BN27 3JU.

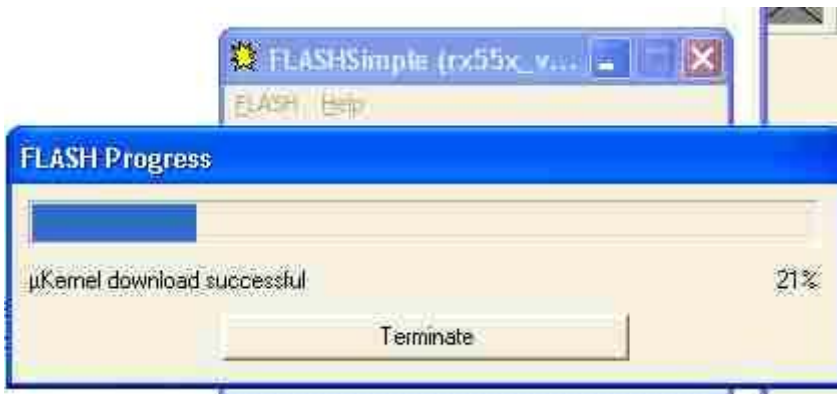
Tel:+44(0)1323 842727 Fax:+44 (0)1323 842728 Support:+44(0)1323 444600 www.bbvccv.com



Power off the Starcard and plug it the Rx450 Programming adaptor with the components facing away from the front of the Starcard.

Power up the Starcard.

Click on **FLASH program** and the following status window will be displayed.



If programming is successful then this window is shown



Power off the Starcard and click **OK**. Then remove the Rx450 Programming Adaptor. When the Unit is powered up you will need to make sure the three LEDs comes on for about 1 second.

If you have another window that opens that shows an error then power the Starcard off and then on again and try programming again. If it still doesn't program correctly power the Starcard off again and make sure that the Programming adaptor is connected correctly. Power the Starcard on again and try the procedure again.

It is VERY important to make sure that the Rx450 Programming Adaptor is NOT removed when the Starcard is powered up as this could damage the micro processor.

Building Block Video Ltd

(STARCARD CONVERTER BEING PROGRAMMED FROM A Rx450 PROGRAMMING ADAPTER 15 011 2007)

17 Apex Park, Diplocks Industrial Estate, Hailsham, East Sussex, UK. BN27 3JU.

Tel:+44(0)1323 842727 Fax:+44 (0)1323 842728 Support:+44(0)1323 444600 www.bbvctv.com